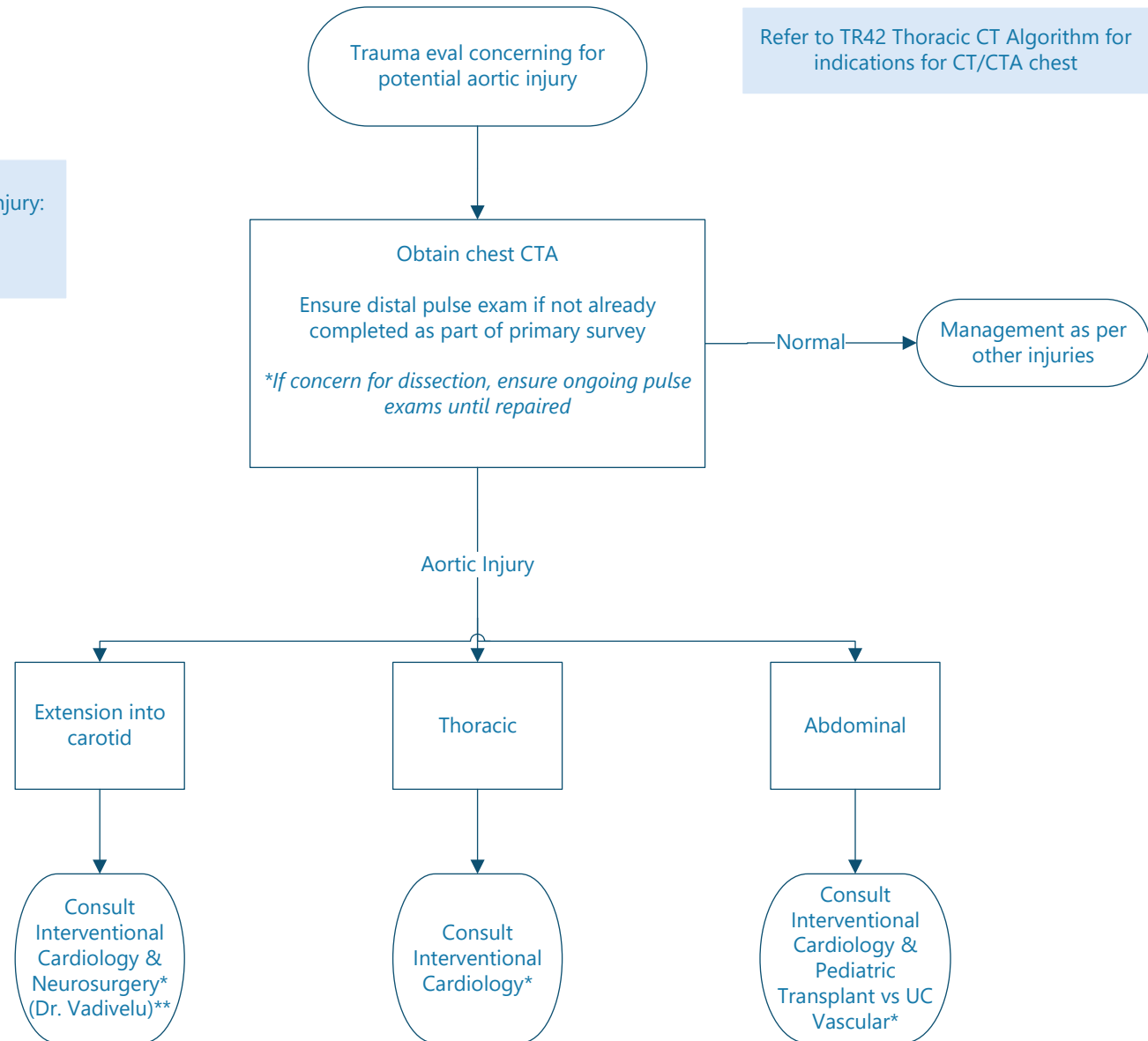


Blunt Aortic Injury

Things to consider in the event of aortic injury:

- Pulse/BP control
- Anticoagulation

Refer to TR42 Thoracic CT Algorithm for indications for CT/CTA chest



*All aortic injury consults should be made by General Surgery/Trauma Attending to consulting service attending(s)

**Neurosurgery consults should go to on-call Neurosurgery Attending who will direct to Dr. Vadivelu as needed