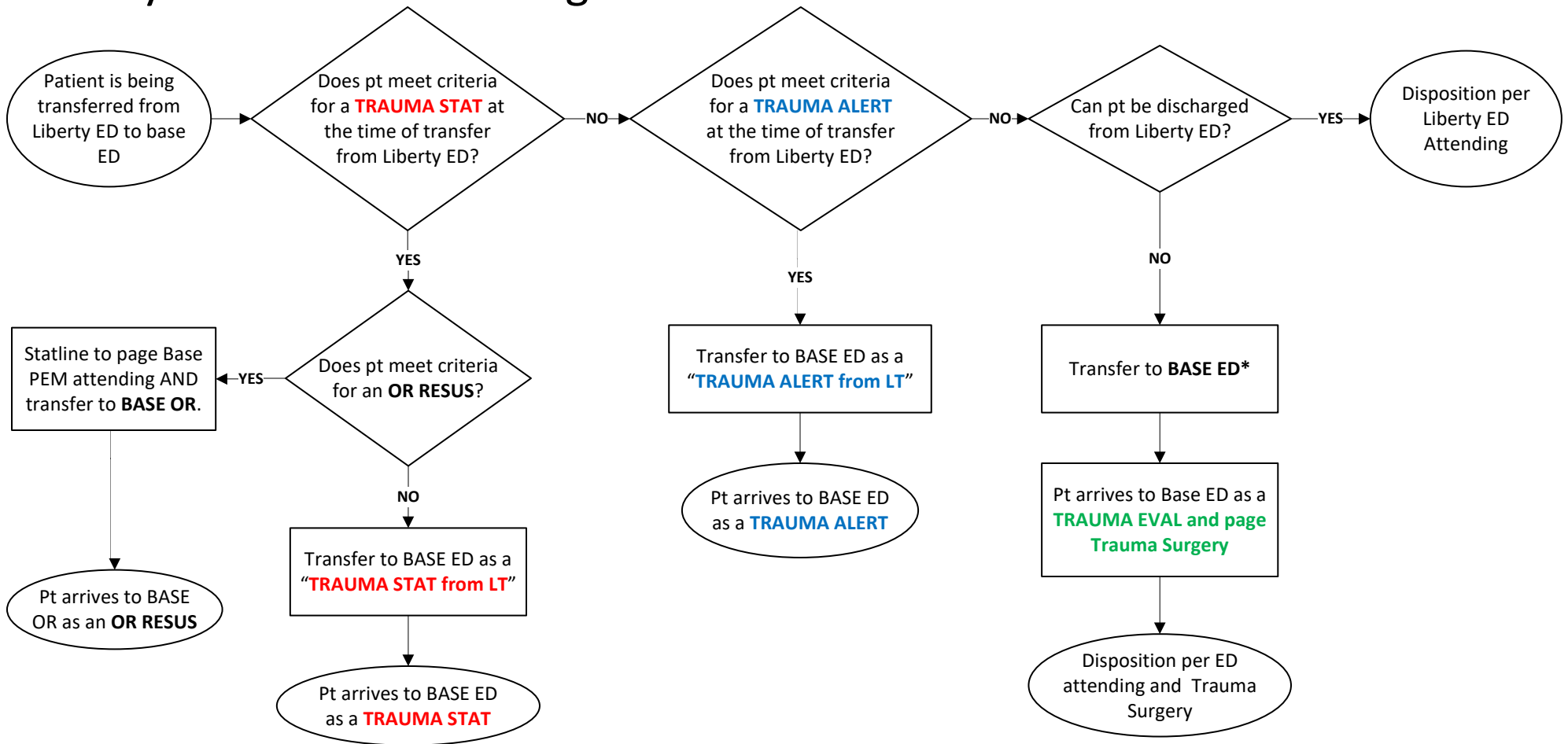


# Liberty Trauma Transfer Algorithm



- Liberty ED is not a Trauma Center. Injured patients that require evaluation by a Trauma surgeon require transfer to base ED and cannot be directly admitted to the hospital
- Patients coming from Liberty ED need to be activated according to the **Trauma Activation Criteria** based on injuries identified and/or continued symptoms
- Trauma Activation Criteria can be found at [trauma.pencincinnati.com](http://trauma.pencincinnati.com)
- Trauma transfers do not require a call to Trauma surgery prior to transfer, unless there are specific questions or concerns

\*If pt was placed in a c-collar but there is no clear history of trauma (i.e. seizure, ingestion, drowning, etc.) and the patient requires PICU level care, then OK to direct admit but with a trauma surgery consult on admission