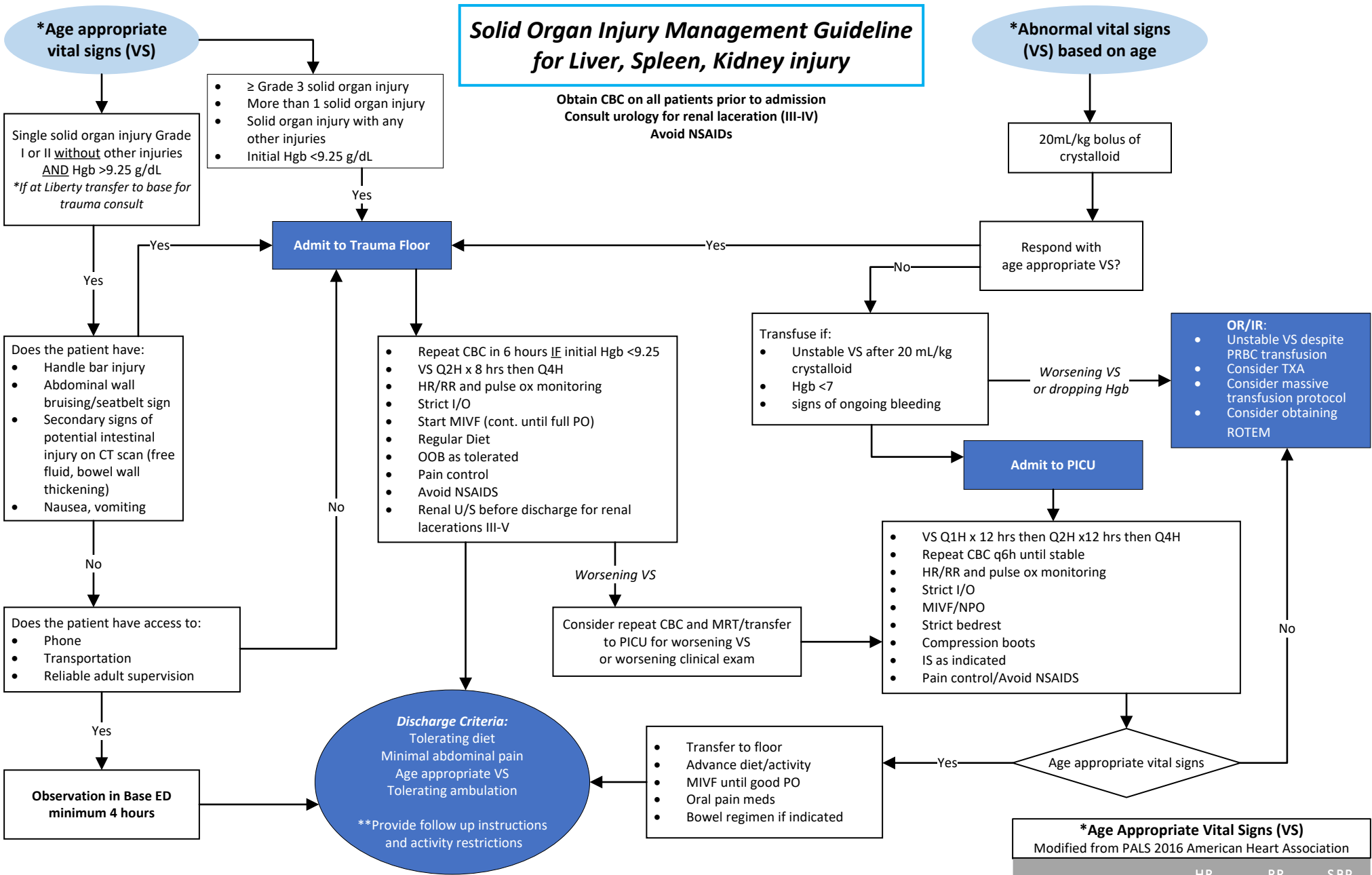


Solid Organ Injury Management Guideline for Liver, Spleen, Kidney injury

Obtain CBC on all patients prior to admission
Consult urology for renal laceration (III-IV)
Avoid NSAIDs



****Follow-up and Activity Restrictions:**

Grade I-II:
Inpatient D/C: Trauma Clinic RN phone call 1 wk
ED D/C: Trauma Clinic appointment 1 wk
Grade III-V: Follow-up appointment 1-2 wks
Return to school: 2-7 days
Activity restrictions: Grade + 2 weeks
No NSAIDs for length of activity restrictions

Renal Laceration Discharge Info:

BP screening at PCP well visit for all renal injuries
Renal U/S should be ordered for 4-6 weeks after discharge for all renal injuries
Trauma will review Grade I & II U/S results with referral to urology if concerns
Grades III-V follow-up with urology

*Age Appropriate Vital Signs (VS) Modified from PALS 2016 American Heart Association			
	HR	RR	SBP
Infant (1-12 mo)	90-180	30-53	>70
Toddler (1-2 y)	80-140	22-37	>70
Preschool (3-5 y)	65-120	20-28	>80
School-Aged (6-12 y)	58-118	18-25	>85
Adolescent (12+ y)	50-100	12-20	>90