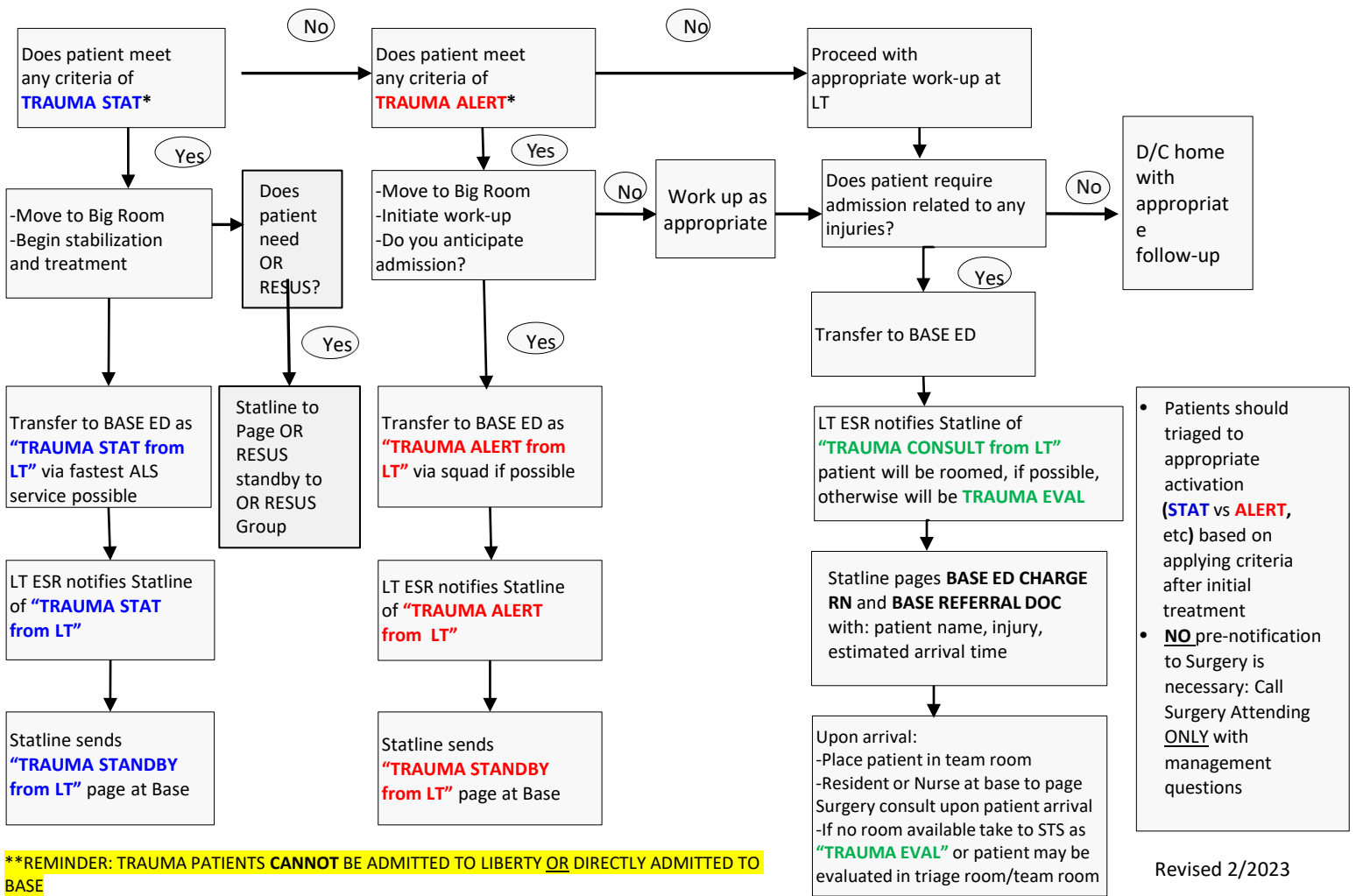


# Liberty (LT) Trauma Transfer Algorithm

\*Base Trauma Activation criteria can be found on the 2<sup>nd</sup> page of this algorithm: please categorize the patient for the appropriate activation UPON ARRIVAL TO BASE ED



- Patients should be triaged to appropriate activation (STAT vs ALERT, etc) based on applying criteria after initial treatment
- **NO** pre-notification to Surgery is necessary: Call Surgery Attending ONLY with management questions

**\*\*REMINDER: TRAUMA PATIENTS CANNOT BE ADMITTED TO LIBERTY OR DIRECTLY ADMITTED TO BASE**

Revised 2/2023

# Trauma Activation Criteria

## Trauma Stat:

- Any penetrating injury to head, neck or trunk
- Respiratory difficulty as evidenced by one or more of the following:
  - Significant increase or decrease in respiratory rate
  - Significant retractions or grunting
  - Patient intubated prior to arrival
  - Unable to maintain or difficult airway
- Tachycardia and / or poor perfusion or unexplained tachycardia (no significant pain or crying as a source)
- Hypotension
- Blood given prior to the patient's arrival
- 40 mL/kg bolus given prior to arrival
- Glasgow Coma Score (GCS)  $\leq 8$
- GCS deterioration by 2
- Hypothermic arrest

## OR Resuscitation:

- Full arrest with pre-hospital signs of life following a non-cranial, penetrating chest or abdominal injury
- Penetrating injury unresponsive to 40 mL/kg fluid administration
- At the discretion of the ED and surgical attending

## Trauma Alert:

- Evidence of abdominal injury on physical exam
  - Abdominal tenderness upon palpation
  - Abdominal bruising or seatbelt mark
  - Without hemodynamic compromise
- GCS 9 – 13
- Spinal cord injury with neurologic deficit
- Two or more proximal long bone fractures
- Ejection from automobile
- Partial or full thickness burn of  $\geq 10\%$  TBSA
- Significant vascular injury including amputation of limb proximal to wrist or ankle
- Emergency Department discretion

## Normal Vital Signs Table

Modified from PALS 2016

	Heart Rate	Respiratory Rate	Systolic Blood Pressure
Infant (1 – 12 month)	90 – 180	30 – 53	>70
Toddler (1 – 2 years)	80 – 140	22 – 37	>70
Preschool (3 – 5 years)	65 – 120	20 – 28	>80
School-Age (6 – 12 years)	58 – 118	18 – 25	>85
Adolescent (12+ years)	50 - 100	12 - 20	>90

## Trauma Evaluation

- Motor vehicle collision
- Struck or run over by motor vehicle (pedestrian or bike)
- Fall greater than 10 feet
- Any mechanism deemed to place the patient at risk for multi-system injury
- Any patient immobilized with a backboard and/or cervical collar
- Partial or full thickness burn between 5% and 9% TBSA
- Any burn less than 5% requiring immediate pain management
- GSW (non-BB) to an extremity
- Tourniquet application prior to arrival and hemodynamically stable

**\*\*\*The trauma team should be activated for any patient who meets criteria regardless of prior evaluation at an outside facility\*\*\***