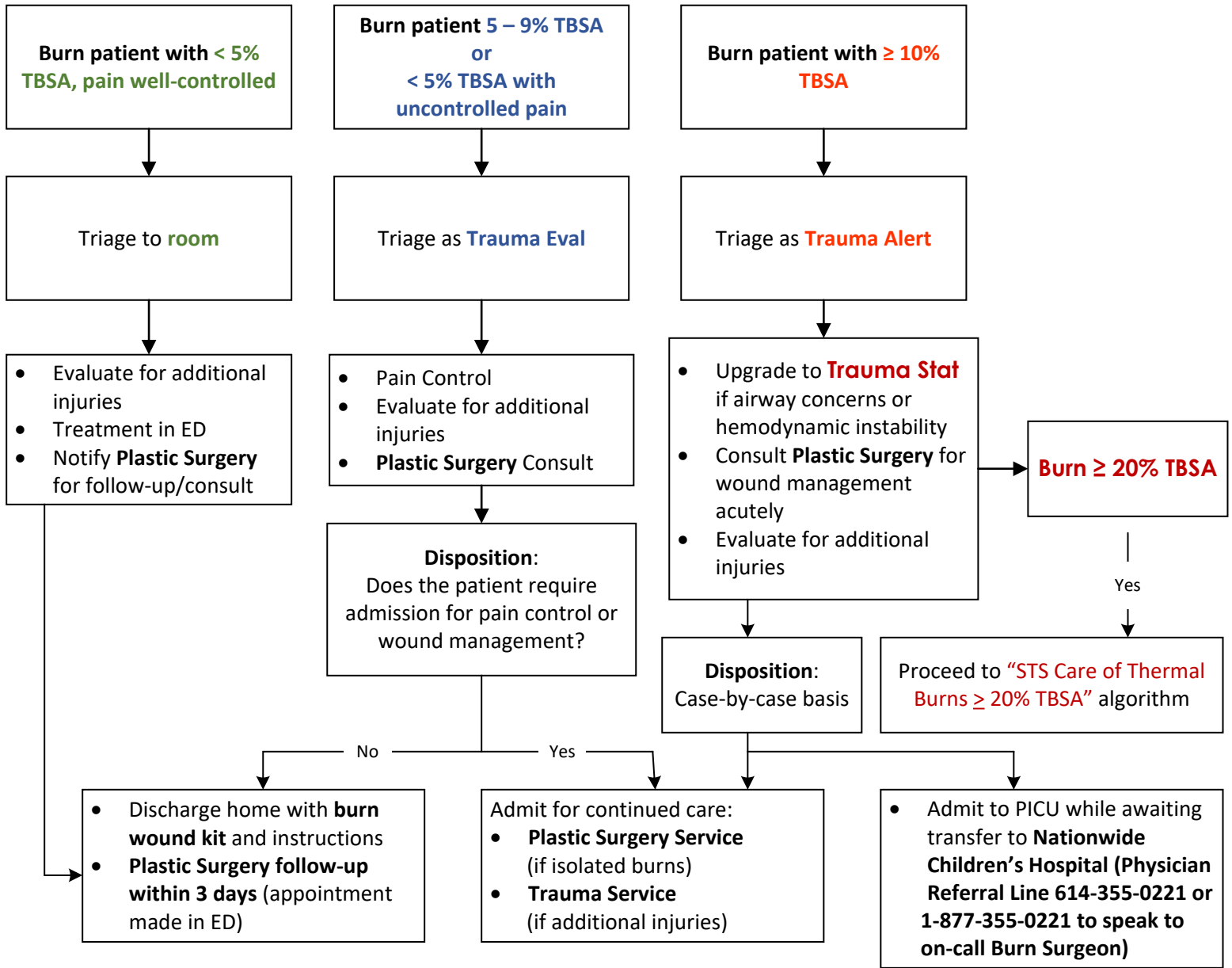


# CCHMC ED – General Thermal Burns

\* **For Burn Referrals:** Assist outside hospital with estimation of TBSA affected, assess need for transfer to CCHMC to assist with acute stabilization versus direct transfer to Nationwide Children’s Hospital (Physician Referral Line (614) 355-0221 or 1-877-355-0221 to speak to on-call Burn Surgeon)



**Burn Size Estimation:**

- Patient’s hand = 1% TBSA
- Refer to Lund and Browder chart for more accurate estimation of larger burns (hard copies in STS binders or scroll down to visualize)

**Vital Sign Monitoring:**

Age	Acceptable HR	Minimum Systolic B/P	Minimum Mean BP
0- 1 yr.	120-168	65	45
1-2 yr.	120-168	68	45
3-5 yr.	95-145	72	50
6-7 yr.	95-145	75	50
8-9 yr.	95-145	80	50
10 & older	72-120	80	55

**Fluid Resuscitation:**

- If fluid resuscitation is required, place Foley catheter to monitor urine output
- Weight < 30kg: 1mL/kg/hr
- Weight > 30kg: 0.5 mL/kg/hr
- Adults: 0.5 mL/kg/hr or 30-50 mL/hr



Modified from

# Shriners Hospitals for Children™

CINCINNATI

## Burn Estimate and Diagram Form

## INITIAL Lund Browder Burn Diagram

\_\_\_\_\_ Name

\_\_\_\_\_ Age

\_\_\_\_\_ Date of Burn

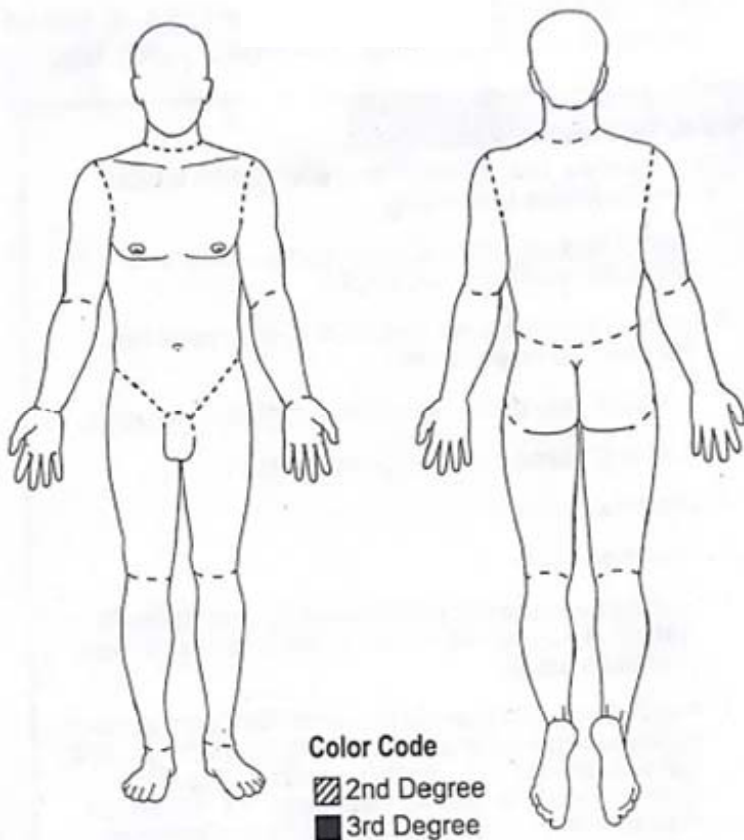
\_\_\_\_\_ Time of Burn

\_\_\_\_\_ Height (cm)

\_\_\_\_\_ Weight (kg)

**CAUSE OF BURN:**

- Chemical
- Contact
- Electrical
- Flame
- Questionable Circumstances
- Inhalation Injury
- Scald
- Other: \_\_\_\_\_



Area	Birth 1 yr.	1-4 yrs.	5-9 yrs.	10-14 yrs.	15 yrs.	Adult	Initial TBSA	
							2°	3°
Head	19	17	13	11	9	7		
Neck	2	2	2	2	2	2		
Ant. Trunk	13	13	13	13	13	13		
Post. Trunk	13	13	13	13	13	13		
R. Buttock	2.5	2.5	2.5	2.5	2.5	2.5		
L. Buttock	2.5	2.5	2.5	2.5	2.5	2.5		
Genitalia	1	1	1	1	1	1		
R.U. Arm	4	4	4	4	4	4		
L.U. Arm	4	4	4	4	4	4		
R.L. Arm	3	3	3	3	3	3		
L.L. Arm	3	3	3	3	3	3		
R. Hand	2.5	2.5	2.5	2.5	2.5	2.5		
L. Hand	2.5	2.5	2.5	2.5	2.5	2.5		
R. Thigh	5.5	6.5	8	8.5	9	9.5		
L. Thigh	5.5	6.5	8	8.5	9	9.5		
R. Leg	5	5	5.5	6	6.5	7		
L. Leg	5	5	5.5	6	6.5	7		
R. Foot	3.5	3.5	3.5	3.5	3.5	3.5		
L. Foot	3.5	3.5	3.5	3.5	3.5	3.5		
<b>Total:</b>								

**Resuscitation Guidelines**

- 4 ml x % TBSA burn \_\_\_\_\_ x kg \_\_\_\_\_ = \_\_\_\_\_ ml / 24 hrs
- Total ml calculated amount divided by 16 = initial hourly rate  
(Repeated Bolus Therapy NOT Recommended)