

Guideline



CCHMC Trauma Service Operation Guidelines

Title: Non Operative Management Blunt Pancreatic Injury

Effective Date: 07/2020

Number: TR32

Page:1 of 3

1.0 SCOPE

- 1.1 Care of the Trauma Services patient at CCHMC.

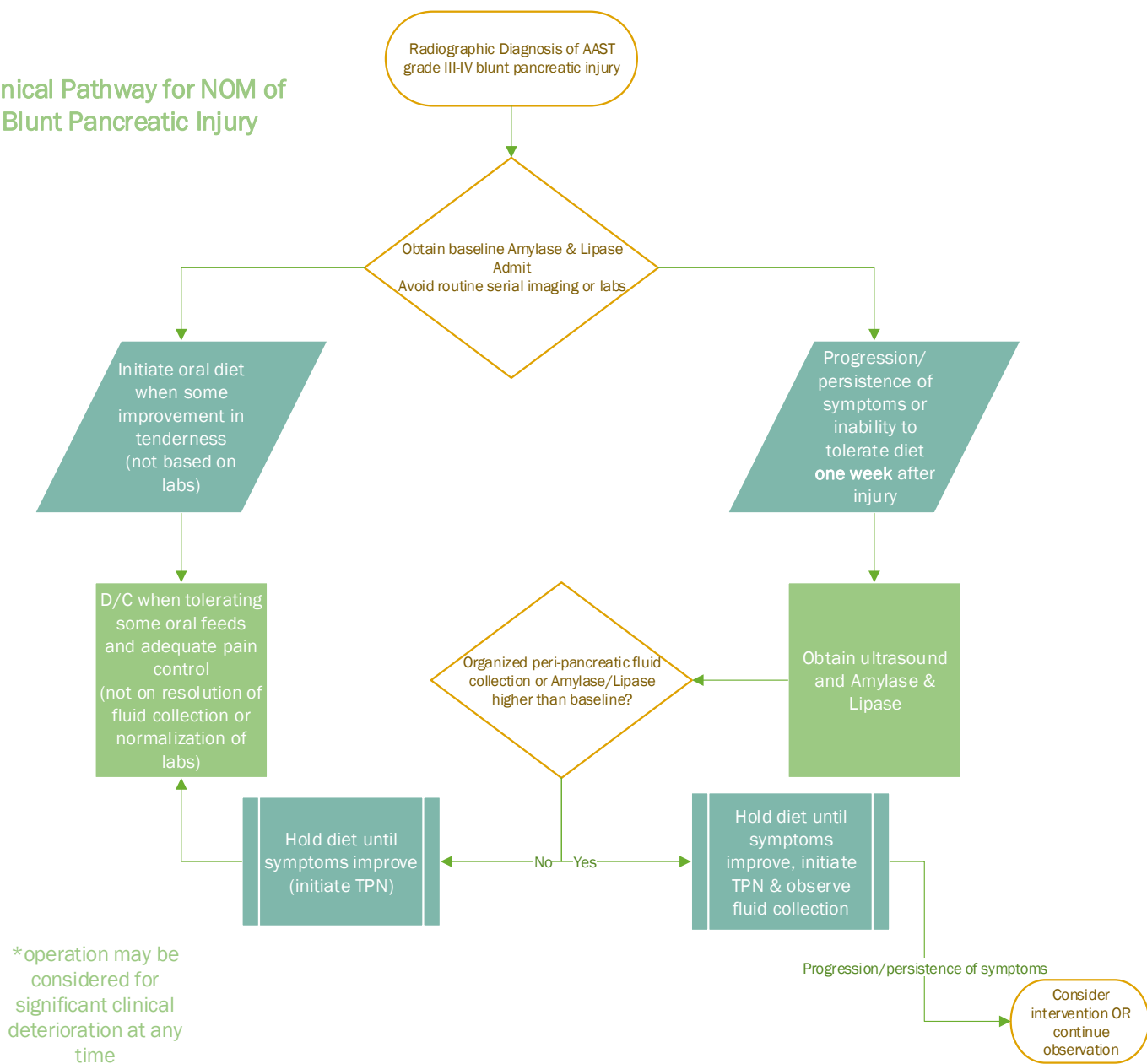
2.0 DEFINITIONS

- 2.1. **Injury Grade:** Defined by The American Association for the Surgery of Trauma's organ injury scale.
- 2.2. **Pancreas Injury:** Any evidence on CT scan of injury to the pancreas.

3.0 GUIDELINE

- 3.1. Diagnosis of pancreatic injury
- 3.2. Refer to blunt pancreatic injury flow diagram next page

Clinical Pathway for NOM of Blunt Pancreatic Injury



4.0 REFERENCES

4.1 Naik-Mathuria, B. (2016). Practice variability exists in the management of high grade pediatric pancreatic trauma. Pediatric Surgery International, 789-794.

5.0 APPROVALS

All revisions of this guideline are approved by the Trauma Service Department. This guideline is reviewed every three years or sooner if deemed necessary. Policy authority for this document resides with the Trauma Service Department. This guideline is approved by the Trauma Services Manager and the Director of Trauma Services.

HISTORY	
Original Date	
07/2020	
Revision Date	
Review Date	