

# Guideline



## CCHMC Trauma Service Guidelines

Title: Blunt Abdominal Trauma Evaluation

Effective Date: 06/2020

Number: TR-31

Page: 1 of 4

### 1.0 SCOPE

- 1.1. Care of the Trauma Services Patient at CCHMC.
- 1.2. This guideline provides the minimum standard of care for any patient with a suspected blunt abdominal injury.

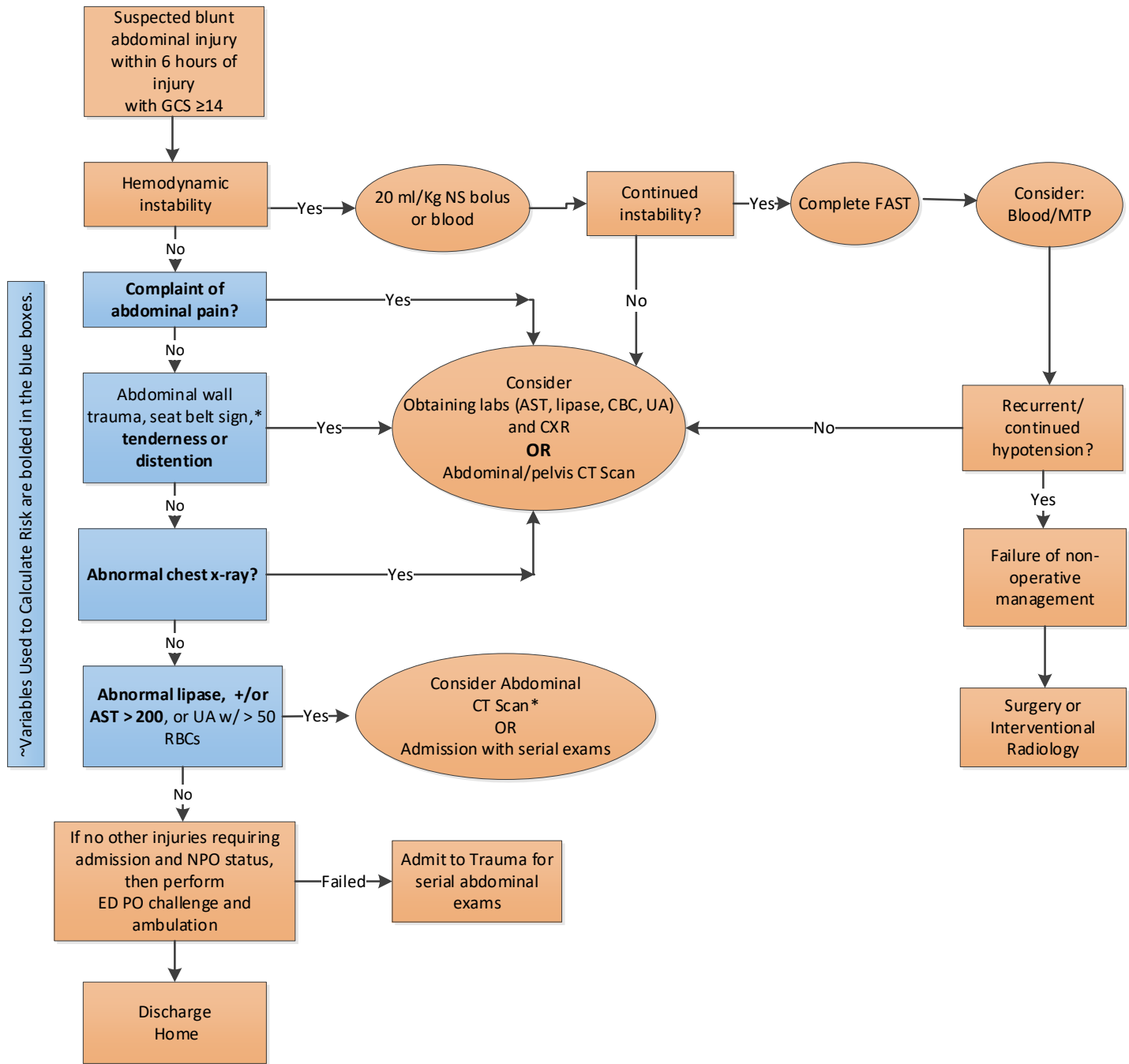
### 2.0 DEFINITIONS

- 2.1. **Blunt abdominal trauma (BAT):** Physical trauma to the abdomen by either impact or injury

### 3.0 GUIDELINE

- 3.1. See below algorithm

# Blunt Abdominal Trauma (BAT) Evaluation



~Variables Used to Calculate Risk are bolded in the blue boxes.

**Risk of Intra-Abdominal Injury and Patients with Intra-Abdominal Injuries Receiving Acute Intervention According to the Number of Prediction Rule Variables Present.**

| No. of Variables~ Present | Risk of Any IAI | Risk of IAI-I |
|---------------------------|-----------------|---------------|
| 0                         | 0.7             | 0             |
| 1                         | 4.5             | 0.6           |
| 2                         | 16.8            | 4.8           |
| 3                         | 37.8            | 8.9           |
| 4 or more                 | 62.6            | 15.2          |

Source: Streck, et al. Children at low risk for blunt abdominal injury. *Journal American College of Surgeons*, Vol. 224, No. 4, April 2017, p. 451.

Key:  
 IAI = intra-abdominal injury  
 IAI-I = intra-abdominal injury patients receiving acute interventions

**CT Results and Disposition Plan**

- Negative CT and resolved abdominal pain and tenderness = DC Home
- Negative CT w/ ongoing pain and/or tenderness = Admit
- Positive CT = Admit
- Questionable CT Findings = Admit

\*Minor abrasions or bruise attributed to seat belt with no tenderness does not mandate a CT scan, use clinical judgement

#### 4.0 REFERENCES

- 4.1. Streck, C. J., Vogel, A. M., Zhang, J., Huang, E. Y., Santore, M. T., Tsao, K., ... & Collaborative, P. S. R. (2017). Identifying children at very low risk for blunt intra-abdominal injury in whom CT of the abdomen can be avoided safely. *Journal of the American College of Surgeons*, 224(4), 449-458.

#### 5.0 APPROVALS

All revisions of this guideline are approved by the Trauma Service Department. This guideline is reviewed every three years or sooner if deemed necessary. Authority for this document resides with the Trauma Service Department. This guideline is approved by the Trauma Services Manager and the Director of Trauma Services.

| HISTORY              |            |
|----------------------|------------|
| <b>Original Date</b> | 01/2018    |
| <b>Revision Date</b> | 6/19, 5/20 |
| <b>Review Date</b>   | 06/18      |

