

Guideline



CCHMC Trauma Service Guidelines

Title: Neurosurgery Minor Head Injury Flow Diagram

Effective Date: 05/2015

Number: TR-26

Page: 1 of 3

1.0 SCOPE

- 1.1 Care of the Trauma Services Patient at CCHMC.
- 1.2 This guideline provides the minimum standard of care for any patient with suspected or confirmed head injury.

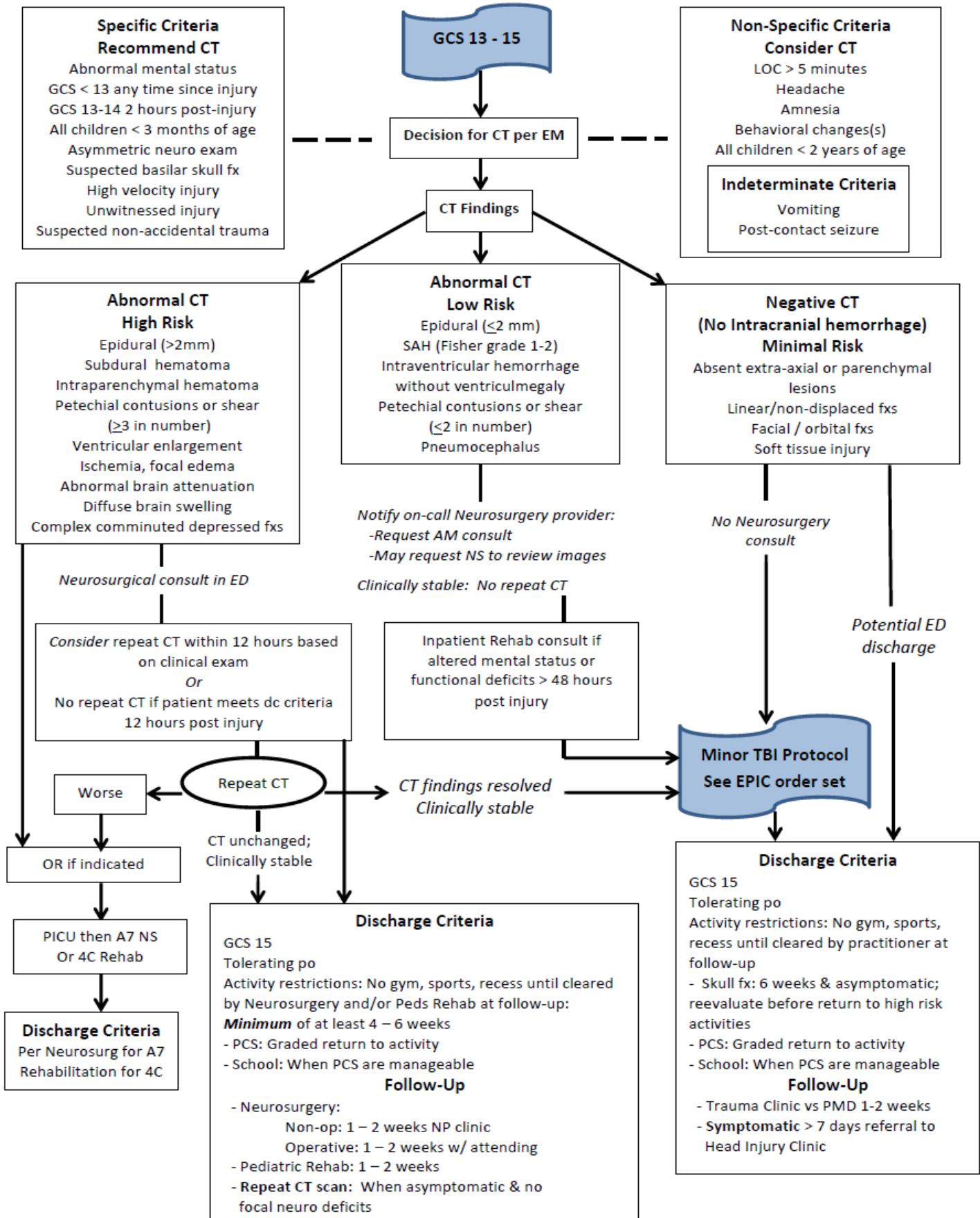
2.0 DEFINITIONS

- 2.1. Minor head injury: Glasgow Coma Score (GCS) 13 - 15

3.0 GUIDELINE

- 3.1. Complete primary and secondary survey per guidelines.
- 3.2. Refer to Minor head injury flow diagram next page

CCHMC Neurosurgery Minor Head Injury Algorithm



4.0 REFERENCES

- 4.1. Bressan, S, Romanato, S, Mion, T, Zanconato, S, & Dalt, LD. (2012). Implementation of adapted PECARN decision rule for children with minor head injury in the pediatric emergency department. *Academic Emergency Medicine*, 19, 801-807
- 4.2. Kuppermann, N, Holmes, JF, Dayan, PS, Hoyle, JD, et al.. (2009). Identification of children at very low risk of clinically-important brain injuries after head trauma: A prospective cohort study. *Lancet*, 374, 1160-1170.

5.0 APPROVALS

All revisions of this guideline are approved by the Trauma Service Department. This guideline is reviewed every three years or sooner if deemed necessary. Policy authority for this document resides with the Trauma Service Department. This guideline is approved by the Trauma Services Manager and the Director of Trauma Services.

HISTORY	
Original Date	
02/2006	
Revision Date	
03/2015,5/15	
Review Date	