

Guideline



CCHMC Trauma Service Guidelines

Title: Infant < 1 Year: Indication for Inflicted Injury Workup

Effective Date: 01/2015

Number: Tr-08

Page: 1 of 3

1.0 SCOPE

- 1.1. Care of the Trauma Services Patient at CCHMC.
- 1.2. This guideline provides the minimum standard of care for any patient with suspected or confirmed inflicted injury in those less than 1 year of age.

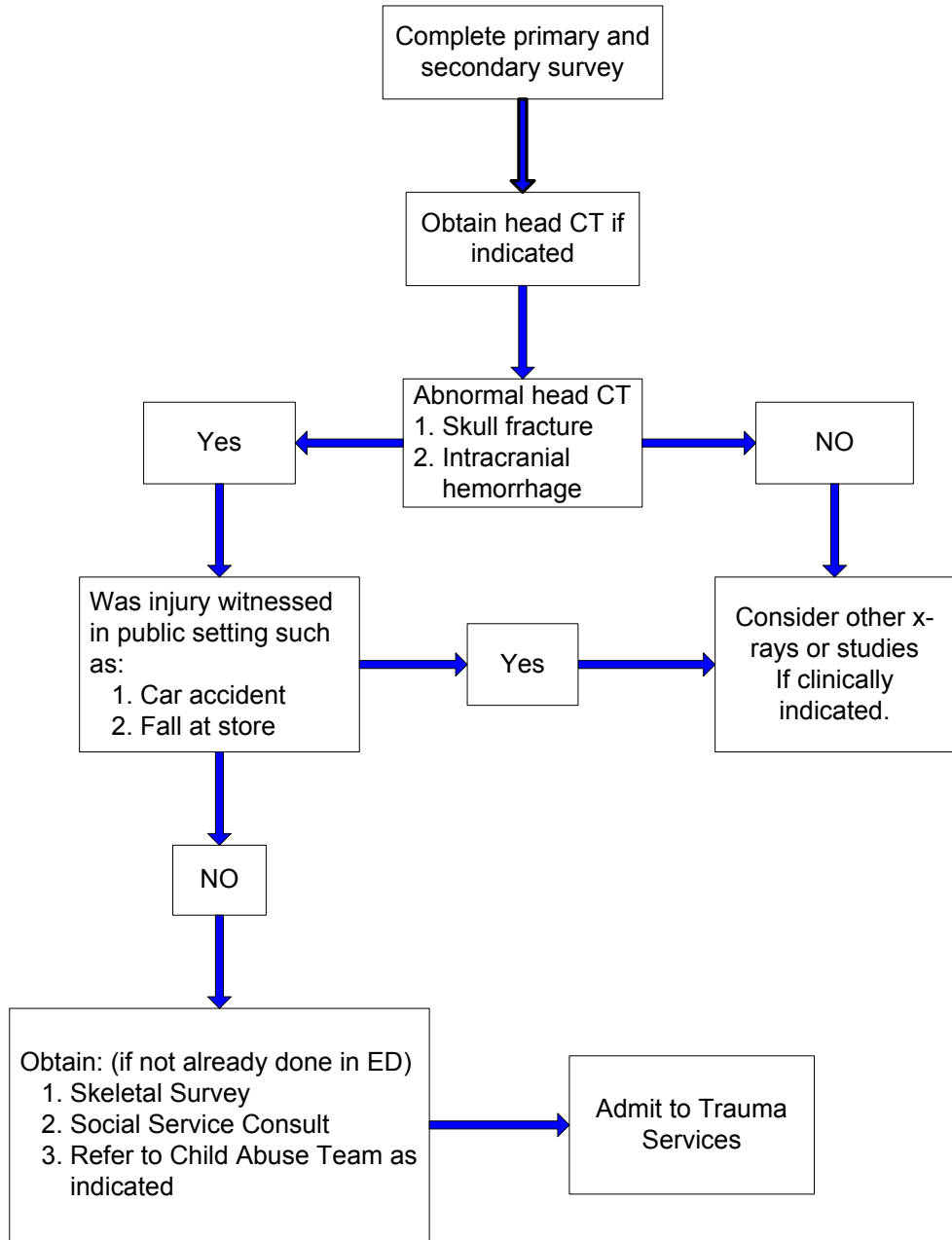
2.0 DEFINITIONS

- 2.1 Infants < 1yr of age with head injury admitted to Trauma Service
- 2.2 Abnormal head CT defined as any head CT with:
 - 2.2.1 Skull fracture
 - 2.2.2 Intracranial hemorrhage
- 2.3 Public setting defined as setting outside the home where there are individuals other than family members IE:
 - 2.3.1 Car accident
 - 2.3.2 Store

3.0 GUIDELINE

- 3.1. Complete primary and secondary survey per CCHMC guidelines (refer to Figure 1 below).
- 3.2. Obtain head CT if indicated
- 3.3. Normal head CT
 - 3.3.1 Consider other x-rays or studies if clinically indicated
- 3.4. Abnormal head CT: Was injury witnessed in public setting?
 - 3.4.1. If yes, injury witnessed in public setting - Consider other x-rays or studies if clinically indicated
 - 3.4.2. If no, injury was not witnessed in a public setting - Obtain: (if not already done in ED)
 1. Skeletal Survey
 2. Social Service Consult
 3. Refer to Child Abuse Team as indicated
 4. Consider Ophthalmology Consult if intracranial hemorrhage

Figure 1:
Trauma Service
Infant Head Injury Guidelines
Defined as infants < 1 year of age



4.0 REFERENCES

4.1. Rangel, E.L., Cook, B.S., Bennett, B.L., Shebesta, K., Ying, J., Falcone, R.A. Eliminating disparity in evaluation for abuse in infants with head injury: use of a screening guideline. *Journal of Pediatric Surgery*. 2009; 44(6): 1229-1235

5.0 APPROVALS

All revisions of this guideline are approved by the Trauma Service Department. This guideline is reviewed every three years or sooner if deemed necessary. Policy authority for this document resides with the Trauma Service Department. This guideline is approved by the Trauma Service Manager and the Director of Trauma Services.

HISTORY	
Original Date	
02/2008	
Revision Dates:	
11/20/2010	
Review Dates:	
04/14/2015	